

XSM-8S 面板說明【XSM-8S Interface Instructions】

正面
【Front】



上【Top】



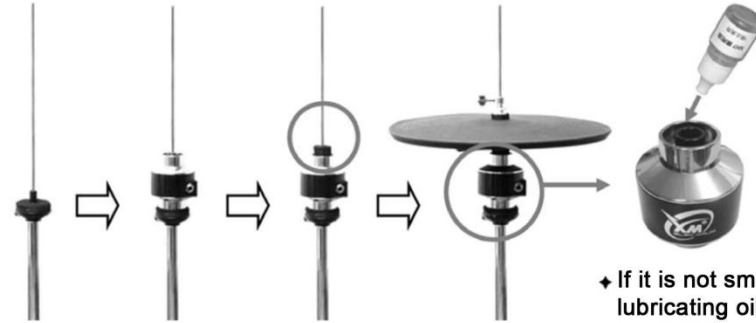
下【Bottom】



恢復原廠設定值 Factory preset

1. 在關機的狀態，同時將面板上的4個按鈕按住不放再用左手無名指開機，直到螢幕右下方出現REC
 2. 再重新開機即可
1. Power off
 2. To press the 4 buttons, "mode", "function", "+", "-", at one time, and in the meantime, to press "power on" with a ring finger of left hand
 3. Until "REC.." be emerged on the monitor, then loose your hands
 4. Power off again
 5. Power on

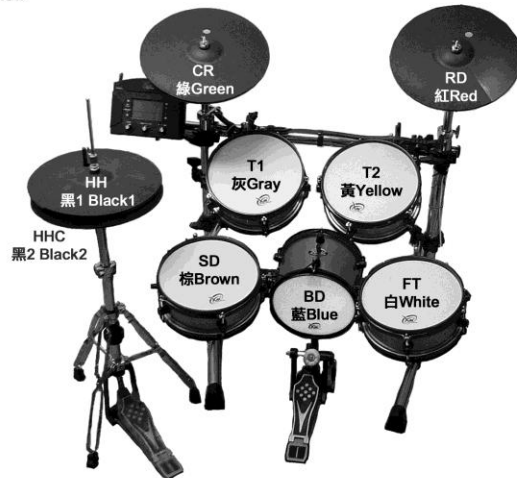
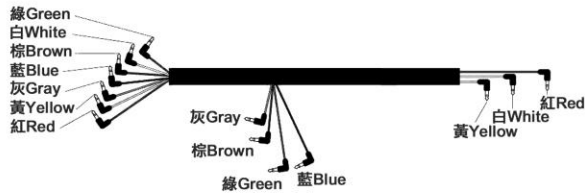
◆ XH6 Hi-Hat 安裝說明【XH6 Hi-Hat Setting】



◆ 若感覺不滑順，可將內附的潤滑油滴入指定位置

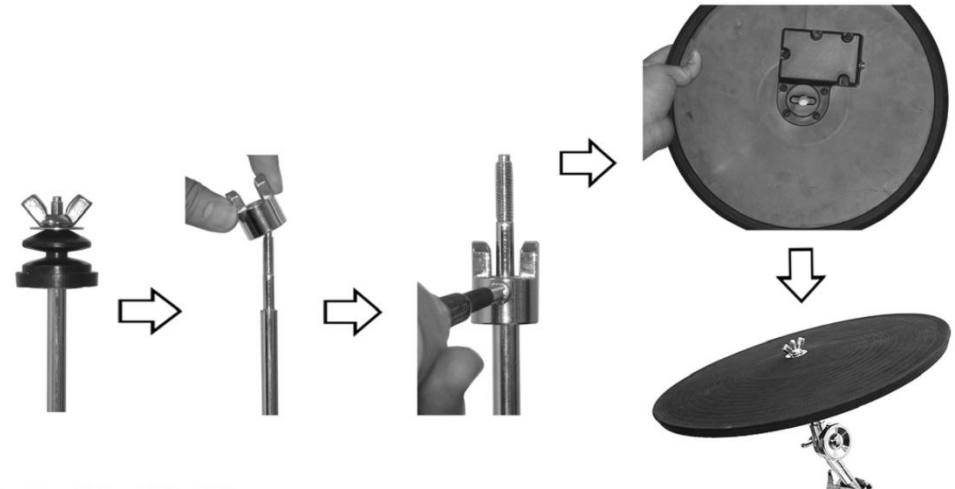
◆ If it is not smooth please drop the lubricating oil into the marked position

XMA 導線安裝說明【A Line Setting】



- | | |
|-----|-----------|
| BD | 藍Blue |
| SD | 棕Brown |
| FT | 白White |
| T2 | 黃Yellow |
| T1 | 灰Gray |
| RD | 紅Red |
| CR | 綠Green |
| HH | 黑1 Black1 |
| HHC | 黑2 Black2 |

◆ XCRP Cymbal 安裝說明【XCRP Cymbal Setting】



XM Enterprise Co., Ltd.
Tel: +886-4-7567749
Fax: +886-4-7567708
100, Ln. 511, Taiping Rd., Hemei Township, Changhua County 508, Taiwan (R.O.C)
E-mail: info@xm-world.com
Http://xm-world.com